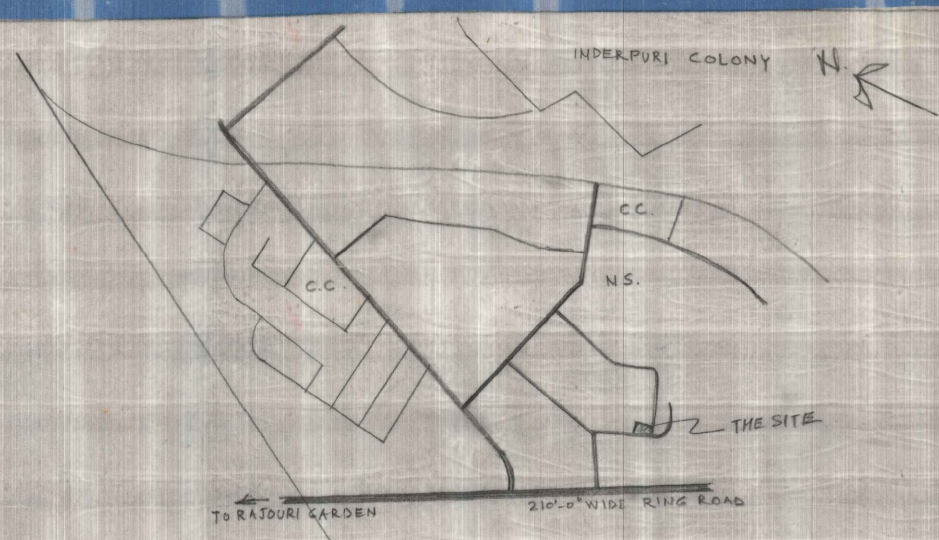
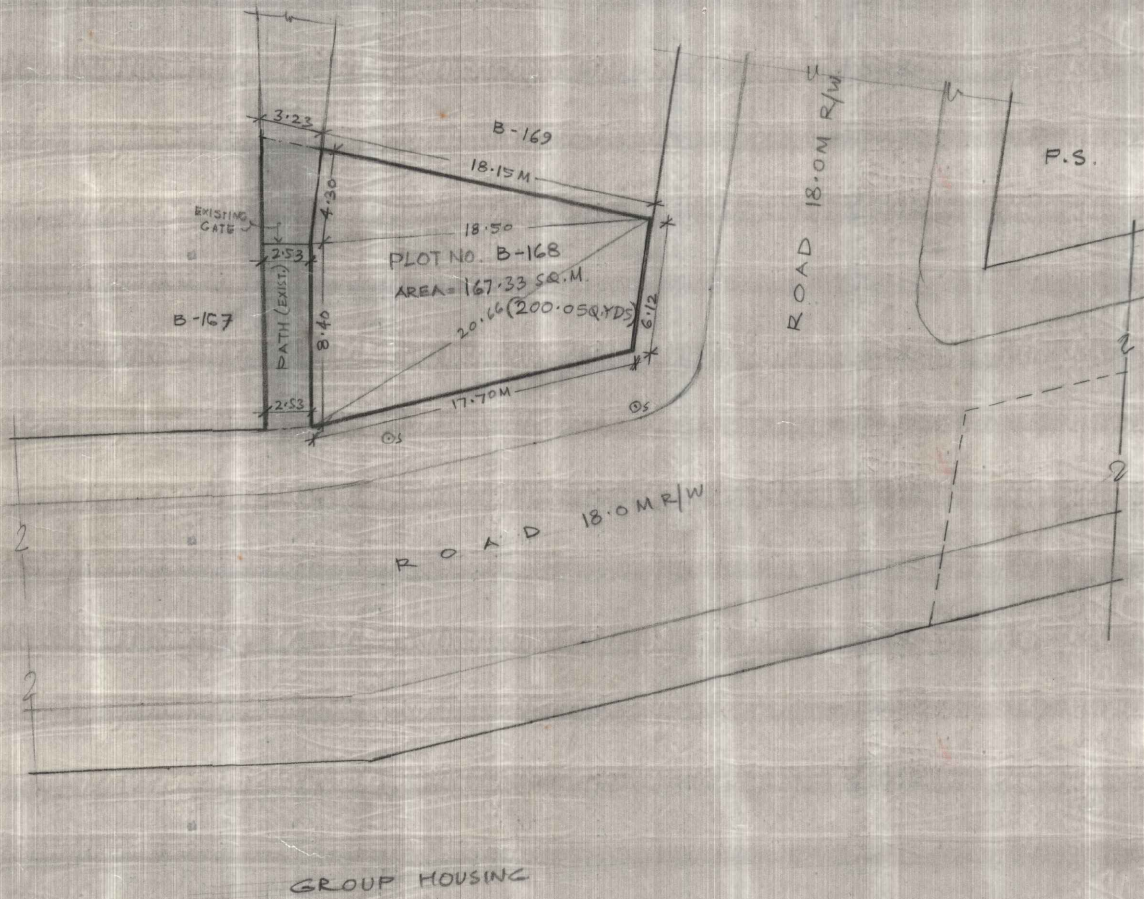


PART DEVELOPMENT PLAN OF NARAINA VIHAR



KEY PLAN



THE PLAN HAS BEEN AUTHENTICATED BY DIR.(AP-I) DATED 04-11-04 AND VERIFIED BY DY. DIR.(ARCH) COORDN. DATED 22-11-04 IN FILE NO. F3(28)2004-MF.

-sd- DY. DIRECTOR (AP-I) -sd- 4-11-04 DIRECTOR (AP-I)

DELHI DEVELOPMENT AUTHORITY
HUPW - COORDINATION UNIT
VERIFIED
THIS PROPOSAL WAS CONSIDERED IN THE
234TH SCREENING COMMITTEE MEETING
HELD ON 4-10-04
VIDE ITEM NO 114 : 2004
-sd-
DY DIRECTOR (ARCH) COORD

D.D.D. N-13
AREA PLANNING - I

STATEMENT OF AREA
TOTAL PLOT AREA = 200.96 SQ.M.
AREA UNDER RESIDENTIAL PLOT = 167.33 SQ.M.
AREA UNDER PATH = 33.63 SQ.M.

- NOTES:
- THIS DRAWING HAS BEEN PREPARED ON THE BASIS OF SURVEY SUPPLIED BY JT DIRECTOR (SURVEY) ON 19-5-04 IN FILE NO. F3(28)2004-MF AND F23(110)85/LSB @
 - PERMISSION SHALL BE OBTAINED FROM THE COMPETENT AUTHORITY BEFORE CUTTING OF TREES
 - DEVELOPMENT CONTROL NORMS AS PER MPD-2001

NOTE:
THIS DRAWING HAS BEEN APPROVED IN 234TH SCREENING COMMITTEE MEETING HELD ON 4-10-04 VIDE ITEM NO 114 : 2004 IN FILE NO. F3(28)2004-MF

PLG-D/IAN PLG.ASST. ASST. DIR. (AP-E)
DY. DIRECTOR (AP-E) DIRECTOR (AP-I)

PLAN SHOWING MODIFICATION IN PLOT NO. B-168 AT NARAINA VIHAR

SCALE: 1:200	DATE: 9 JULY, 04	SCH. NO.
PLG. DIMAN	PLG. ASST.	ASST. DIR.
DY. DIRECTOR	DIRECTOR (AP-I)	ADDL. COMM.